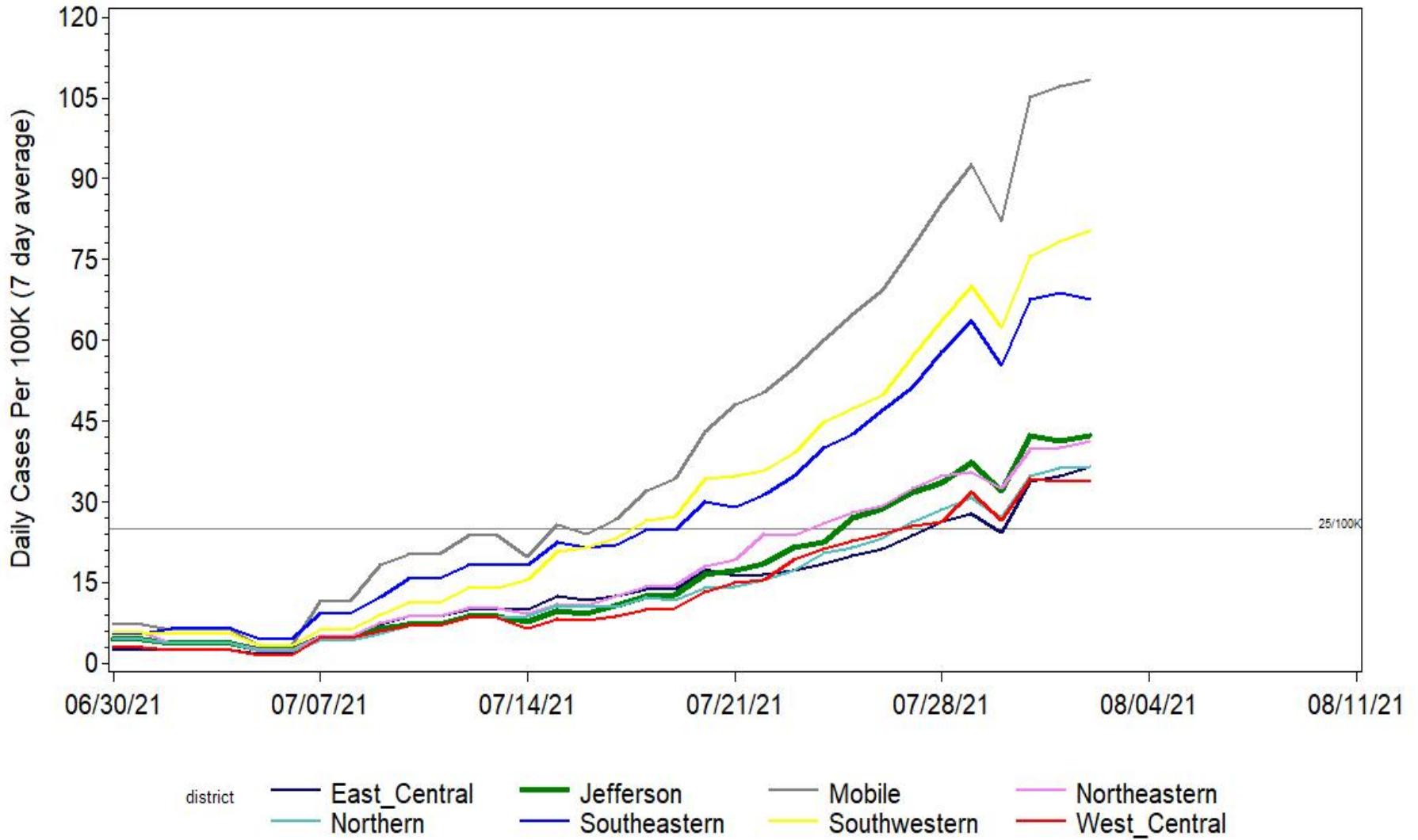


UAB THE UNIVERSITY OF
ALABAMA AT BIRMINGHAM.

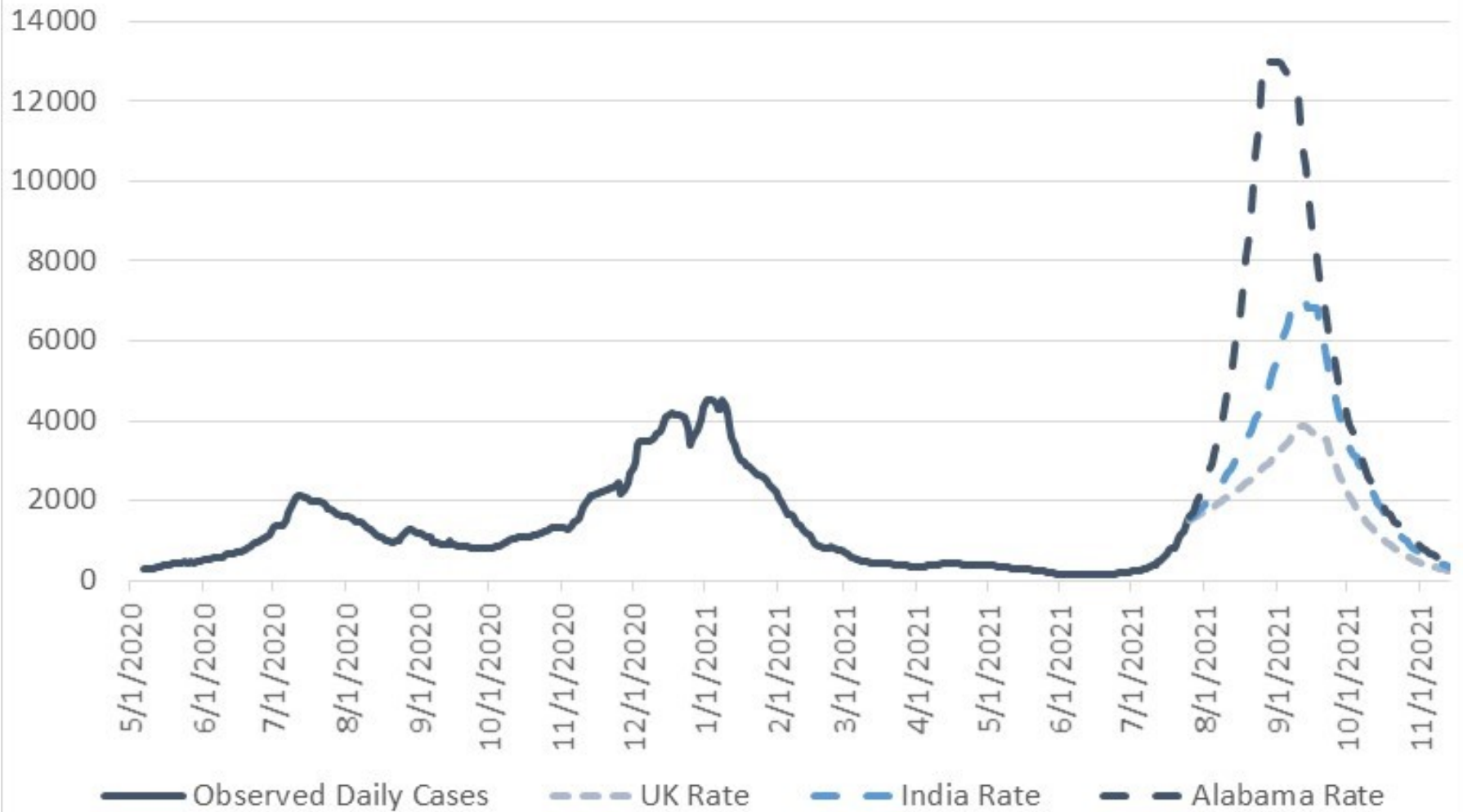
Estimation of COVID Burden in Alabama

August 2, 2021

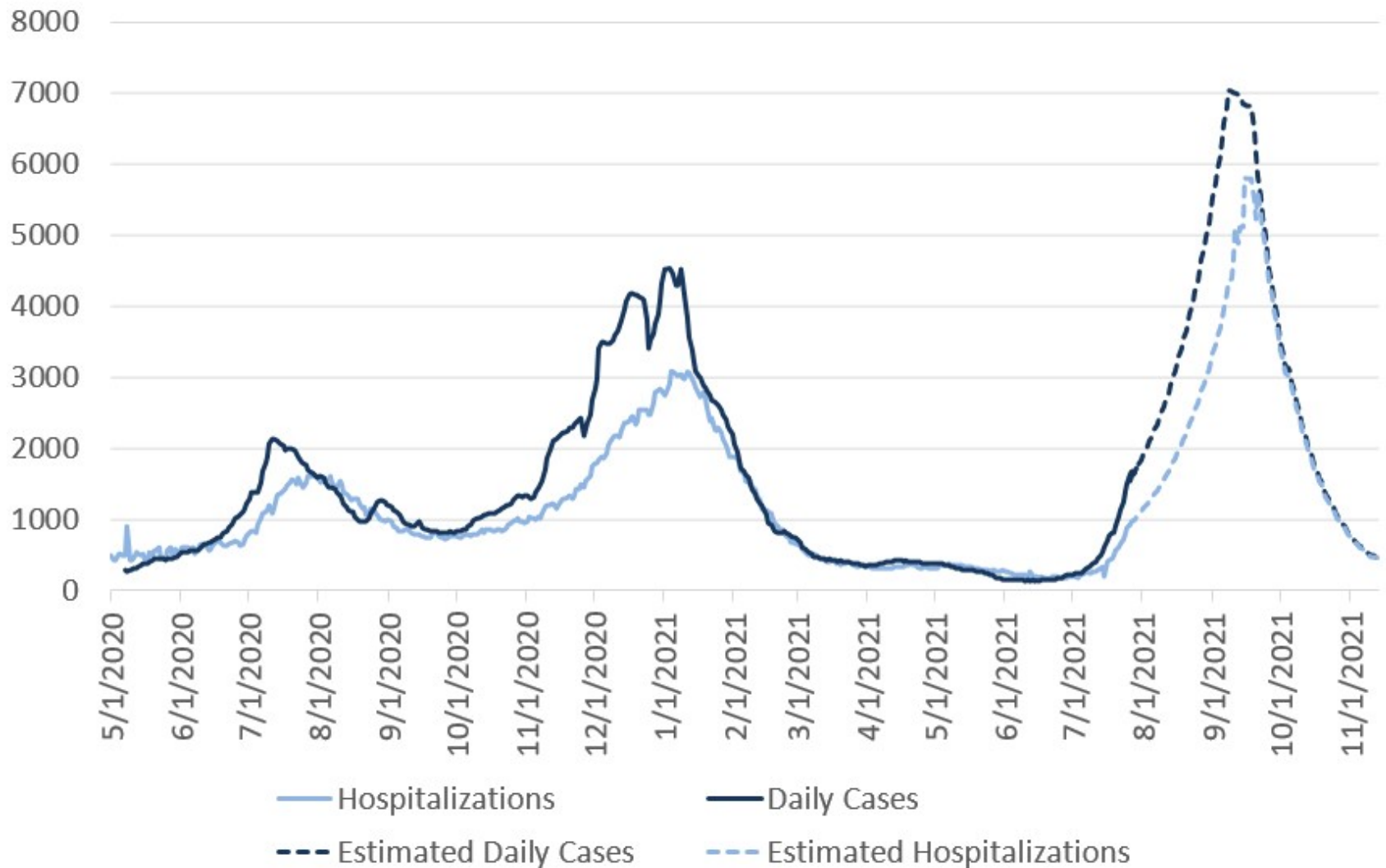
COVID-19 Cases per 100000 Per Day by ADPH District, 30-Jul



Actual Epidemic Curves Observed in Alabama and Predicted Curves in Alabama



COVID19 Epidemic Curve in Alabama - Estimated Cases Based on Epidemic Curve from India Apr-June 2021

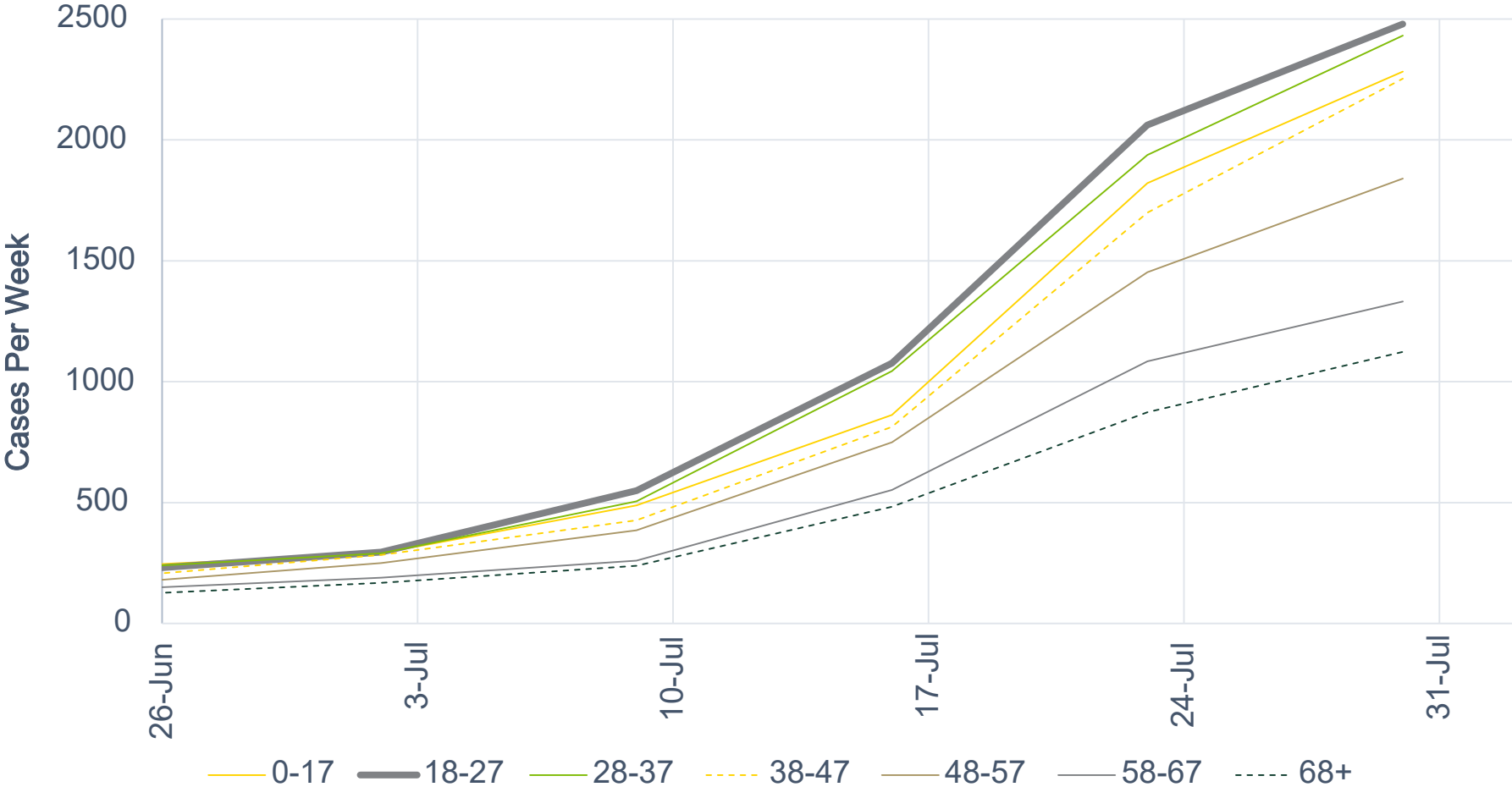


Impact of Outbreak this Fall

	Various Transmission Rates		
	UK	India	Alabama
Peak Daily Cases	3868	7030	13045
Date of Peak	23-Sep	8-Sep	26-Aug
Peak Hospitalizations	2321	4218	7800
Date of Hosp Peak	2-Oct	10-Sep	1-Sep
Total number of days with hospitalizations over 1000	71	69	88
Total Cases AugOct	209784	276236	568393
Total Deaths AugOct	2098	2762	5684
% of population sick at peak	1%	2%	4%
% of population out due to quarantine/isolation at peak	6%	10%	19%

Cases by Age Group – updated 08/01

Total Cases by Age Group



Cases by Age Group – updated 08/01

Total Cases by Age Group

